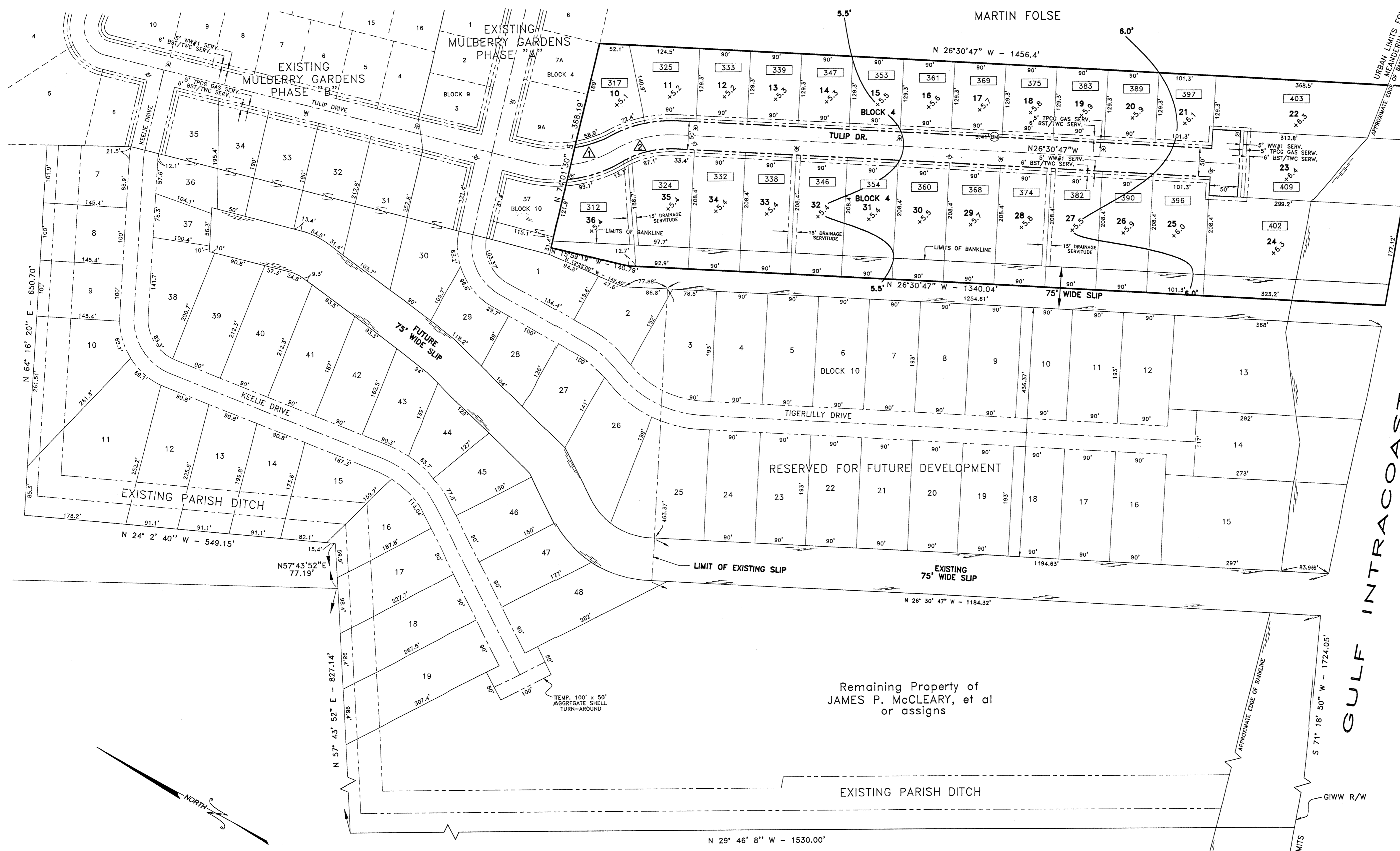


VICINITY MAP

PROJECT SITE

GIWW R/W

GULF INTRACOASTAL WATERWAY



DEDICATION OF STREETS AND SERVITUDES
 THE STREETS AS DESIGNATED ON THIS SUBDIVISION PLAT ARE HEREBY FORMALLY DEDICATED FOR USE AS A SERVITUDE FOR UTILITIES AND PUBLIC PASSAGE, ONLY THE FEE IN THE LAND BEING RESERVED, AND THE PARISH OF TERREBONNE SHALL HAVE THE RIGHT TO IMPROVE AND MAINTAIN THE SAID STREETS FOR THE CONVENIENCE OF THE PUBLIC

THE SERVITUDES AS INDICATED ON THE PRIVATE LOTS AND THE STREET RIGHTS-OF-WAY AS SHOWN ARE HEREBY DEDICATED FOR THE USE OF CONSTRUCTING, OPERATING AND MAINTAINING UTILITIES AND OR DRAINAGE, THE FEE IN THE LAND BEING RESERVED BY THE PROPERTY OWNER.

AUTHORIZED OWNER

APPROVED AND ACCEPTED THIS DATE BY THE HOUMA-TERREBONNE REGIONAL PLANNING COMMISSION

BY _____ FOR _____

CERTIFICATION
 I HEREBY CERTIFY THAT THIS PLAT IS IN ACCORDANCE WITH THE REQUIREMENTS OF THE PARISH OF TERREBONNE AS TO THE BLOCK LAYOUT AND STREET ALIGNMENT, AND, I HEREBY APPROVE THE SAME:

TERREBONNE PARISH CONSOLIDATED GOVERNMENT

CERTIFICATION
 I HEREBY CERTIFY THAT THIS PLAT CONFORMS TO THE LOUISIANA REVISED STATUTES AND TERREBONNE PARISH REGULATIONS AND HEREBY APPROVE THE SAME.

Floyd E. Milford, Jr.
 FLOYD E. MILFORD, JR., P.E.

This is to certify that this survey was done by me or under my direct supervision and control, that the survey was done on the ground and was done in accordance with the most recent minimum STANDARDS OF PRACTICE FOR LAND SURVEYORS as set forth by the STATE OF LOUISIANA BOARD OF REGISTRATION FOR PROFESSIONAL ENGINEERS AND LAND SURVEYORS and that the accuracy specifications and positional tolerances are in accordance with urban area surveys indicated in the above standards.

APPROVED: _____

CURVE DATA	
Δ	22°52'52" 325115'
P	300' 200'
C	79.306' 113.118'
PC	10+00 10+81.30
PT	10+79.84 11+95.98

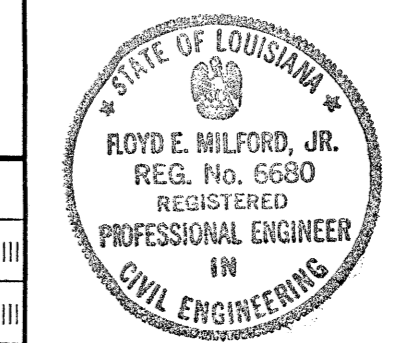
LEGEND	
F.H. ⊕	PROPOSED FIRE HYDRANT
⊙	PROPOSED STREET LIGHT
⊕	BENCH MARK
⊕	BRASS DISC SET IN CONCRETE
⊕	LOT ELEVATIONS
999	HOUSE NUMBERS

RECEIVED
 FEB 11 2000
 ENGINEERING

DATUM: NGVD 88
 SINGLE FAMILY RESIDENTIAL
 SUBDIVISION PLAN

27 TOTAL LOTS

MULBERRY ESTATES
 PHASE "A"
 ROBERT HALE III, INC., DEVELOPER
 SECTION 104, T17S - R17E
 TERREBONNE PARISH, LOUISIANA



MILFORD & ASSOCIATES, INC.
 CONSULTING ENGINEERS HOUMA, LOUISIANA

Floyd E. Milford, Jr.
 APPROVED BY:

DRAWN: NGA
 CHK'D: FEM
 SCALE: 1" = 100'
 DATE: 28JUNE99

NOTE:
 This property is situated within Zone "C" as shown on the F.E.M.A. Flood Insurance Map dated (Map Nos. 225206 0245 C & 225206 0265 C)

DATE	REVISION	BY
40CT99	MODIFIED FUTURE SLIP LOCATION	FEM III
10CT99	LOCATED AS BUILT SECTION OF SLIP	FEM III
16SEP99	REVISE LOT GRADES	FEM III
DATE	REVISION	BY

JOB # 99-34 CAD # 9934-SD FILE # TQ-13