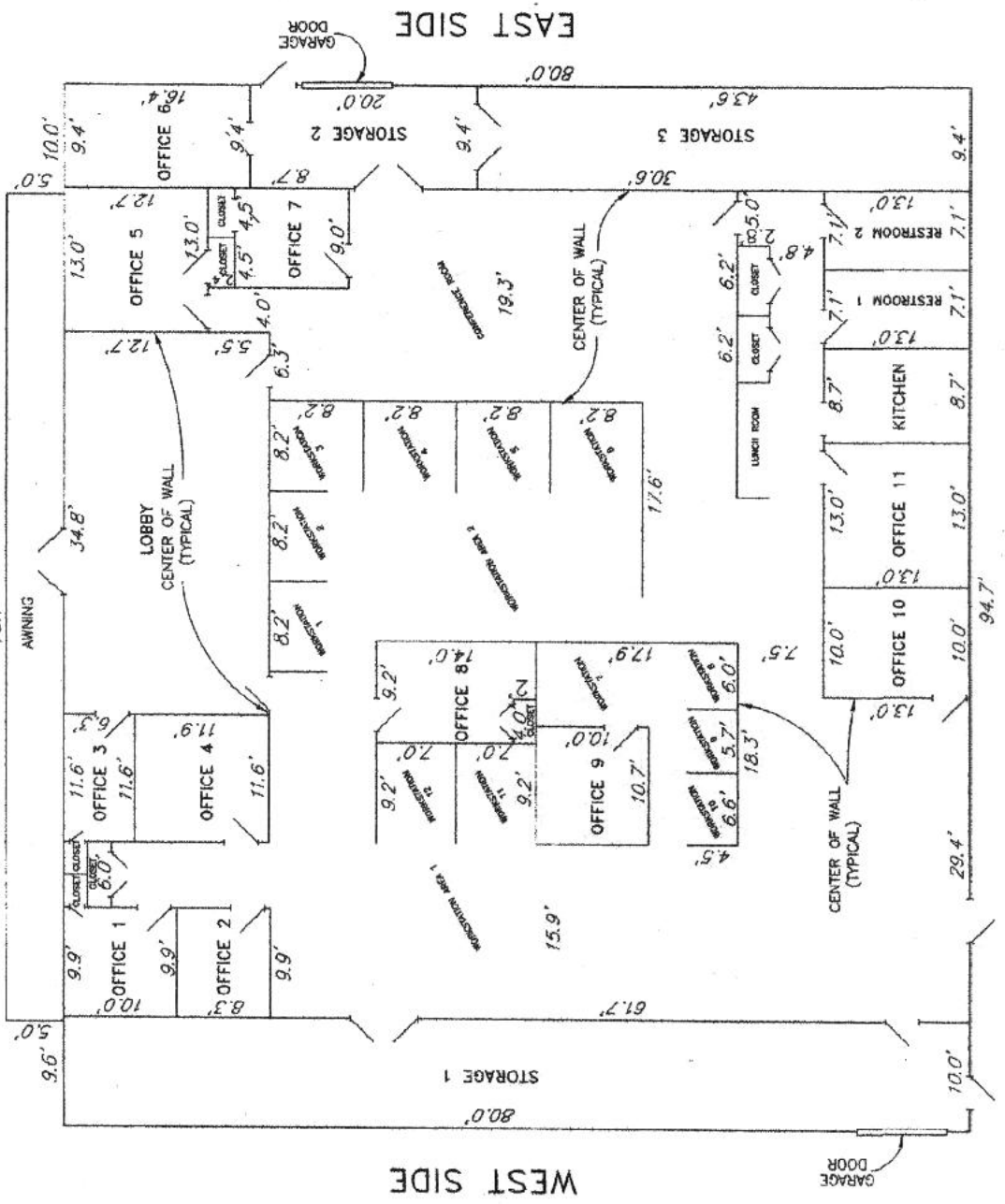


"CHARTER COMMUNICATIONS"  
 4506 COUNTRY DRIVE  
 METAL BUILDING  
 (ON CONC. SLAB)



FRONT



SKETCH SHOWING INTERIOR DETAILS  
 OF BUILDING  
 BELONGING TO TERPA PARTNERS  
 IN SECTIONS 11 & 12, T17S-R18E,  
 TERREBONNE PARISH, LOUISIANA  
 AUGUST 29, 2007  
 SCALE: 1" = 10'

FROM THE OFFICE OF KENETH L. REMBERT, P.L.S.  
 6.35 SCHOOL STREET, HOUMA, LA. 70360